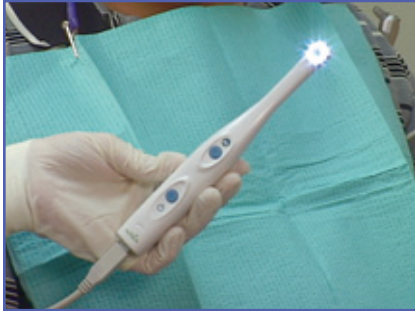
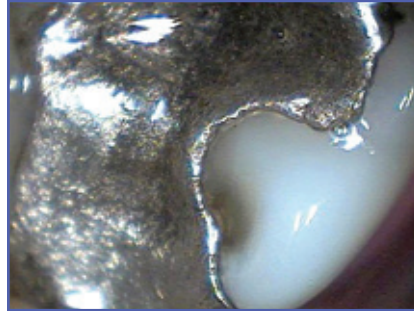


# Intraoral Camera



*Intraoral camera*



*Increased detail*



*A clear understanding*

An intraoral camera is a highly advanced innovation in dentistry that allows us to get a close-up view inside your mouth.

The intraoral camera handpiece is approximately the size and shape of a dental mirror. It has a built-in light source, so it gives us easy-to-see video and still pictures.

We can zoom in on one tooth or give you a video tour of your entire mouth. The images are displayed on a television or computer monitor, so you'll be able to see problems such as worn or broken fillings, cracked teeth, plaque deposits, cavities next to fillings, gum disease, or excessive wear. And after we've treated your dental condition, the intraoral camera lets you see, up close, your beautiful, healthy teeth and gums.

Images captured with an intraoral camera can often be printed out for you to take home or for us to store with your dental record. They can also be sent to specialists and insurance companies.

## **You can see what we see**

The intraoral camera allows you to be an active partner in your dental treatment by enabling you to see what we see inside your mouth. With a clear understanding of your dental conditions, you'll be able to make treatment decisions with confidence.